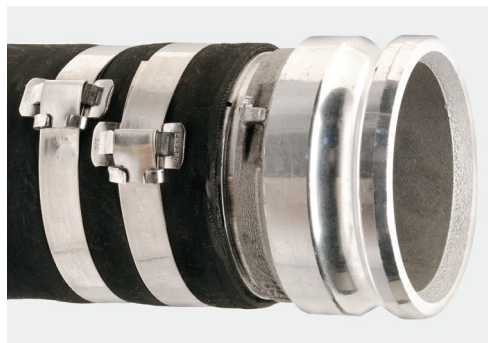


Strapbinder®

High Performance Industrial Hose Clamps, Sign Mounting Systems, Banding, Buckles and Application Tools



Strapbinder®


High Quality Products

Strapbinder®, part of the Ideal-Tridon Group, is the industry leader for fastener products used in a variety of industries, including agriculture, oil/petroleum, mining, chemical, marine, general construction, utilities and municipalities. Smooth seal clamps: J-Series & Pow'r Tight are engineered to minimize leak paths and ensure hose integrity. For larger diameter hoses and other general applications, including the fastening of signs, utility boxes and traffic signals, we offer stainless steel banding, buckles and a line of mounting brackets, accessories and battery and manual application tools.

Index

Band	4
Buckles & Seals	5
Buckles	5
Screwbinder Buckle	5
Specialty Seals	5
Wing Seals	5
GripClamp Battery Powered Clamping Tools	6
ID Tags	7
Manual Tools & Accessories	7
Preformed Hose Clamps	3
Smooth-Seal™ J-Series	3
Pow'r-Tight™	3
Tridon Free End	4
Sign Brackets	7

Catalog Guides

Explanation of Symbols	
W	Width
T	Thickness
L	Length
	Qty/Box
F Max	Force

Material Specification - Stainless Steel			
Type	AISI	Nom	EN
-	201	CrMnNiN	1.4372
W4	304	CrNi	1.4301
W5	316	CrNiMo	1.4401



Please note hose pictures on the front cover are for product viewing only and do not represent the recommended clamp orientation on a hose assembly.

Smooth-Seal™ J-Series

Strapbinder's Smooth-Seal J-Series is ideal for most industrial hose clamping applications. J-Series clamps will work with any of the bench mounted, pneumatic machines in the industry.



STAINLESS STEEL - AISI 201

Art No.	Clamp Inside I.D.		W		T		
	mm	inch	mm	inch	mm	inch	
HBJS201	20.5	13/16	9.4	3/8	0.64	.025	100
HBJS243	25.4	1	9.4	3/8	0.64	.025	100
HBJS202	34.8	1-3/8	9.4	3/8	0.64	.025	100
HBJS203	25.4	1	12.7	1/2	0.76	.030	100
HBJS204	31.7	1-1/4	12.7	1/2	0.76	.030	100
HBJS205	38.1	1-1/2	15.7	5/8	0.76	.030	100
HBJS206	44.4	1-3/4	15.7	5/8	0.76	.030	100
HBJS245	50.8	2	9.4	3/8	0.64	.025	100
HBJS207	50.8	2	15.7	5/8	0.76	.030	100
HBJS208	57.1	2-1/4	15.7	5/8	0.76	.030	100
HBJS209	63.5	2-1/2	15.7	5/8	0.76	.030	100
HBJS210	69.8	2-3/4	19.0	3/4	0.76	.030	50
HBJS211	76.2	3	19.0	3/4	0.76	.030	50
HBJS212	88.9	3-1/2	19.0	3/4	0.76	.030	50
HBJS213	101.6	4	19.0	3/4	0.76	.030	25
HBJS214	114.3	4-1/2	19.0	3/4	0.76	.030	25
HBJS215	127.0	5	19.0	3/4	0.76	.030	25
HBJS216	152.4	6	19.0	3/4	0.76	.030	25
HBJS218	177.8	7	19.0	3/4	0.76	.030	25
HBJS219	203.2	8	19.0	3/4	0.76	.030	25

Pow'r-Tight™ Clamp

Pow'r-Tight™ deliver best-in-class performance for demanding applications ideal for thick walled and higher durometer hose. The Pow'r tight has a smooth seal design for gap free contact, a heavy duty buckle, and is double wrapped to provide optimal holding power.



STAINLESS STEEL - AISI 201

Art No.	Clamp Inside I.D.		W		T		
	mm	inch	mm	inch	mm	inch	
HDSL227	50.8	2	19.1	0.75	0.76	0.030	100
HDSL210	69.8	2.75	19.1	0.75	0.76	0.030	50
HDSL211	76.2	3	19.1	0.75	0.76	0.030	50
HDSL212	88.9	3.5	19.1	0.75	0.76	0.030	50
HDSL213	101.6	4	19.1	0.75	0.76	0.030	25
HDSL214	114.3	4.5	19.1	0.75	0.76	0.030	25
HDSL215	127	5	19.1	0.75	0.76	0.030	25
HDSL216	152.4	6	19.1	0.75	0.76	0.030	25
HDSL218	177.8	7	19.1	0.75	0.76	0.030	25
HDSL219	203.2	8	19.1	0.75	0.76	0.030	25
HDSL228	228.6	9	19.1	0.75	0.76	0.030	10

Free End Open Clamp

Tridon Free-end Clamps are reusable. Designed for closing different types of bellows and CV boots. The clamps are supplied open and straight.



STAINLESS STEEL - W4

Art No.	W		T		L		
	mm	inch	mm	inch	mm	inch	
FE0250052	6.5	0.26	0.4	0.016	250	9.84	100
FE0300052	6.5	0.26	0.4	0.016	300	11.81	100
FE0350052	6.5	0.26	0.4	0.016	350	13.78	100
FE0400052	6.5	0.26	0.4	0.016	400	15.75	100
FE0500052	6.5	0.26	0.4	0.016	500	19.69	100
FE0550052	6.5	0.26	0.4	0.016	550	21.65	100
FE0700052	6.5	0.26	0.4	0.016	700	27.56	100
FE0750052	6.5	0.26	0.4	0.016	750	29.53	100
FE0800052	6.5	0.26	0.4	0.016	800	31.50	100
FE0900052	6.5	0.26	0.4	0.016	900	35.43	100
FE1250052	6.5	0.26	0.4	0.016	1250	49.21	100

Banding

Strapbinder stainless is ideal for large diameter hose assemblies, sign securement, insulation applications and general construction use. It is made with a full round edge for safer handling.



STAINLESS STEEL - W4

Art No.	Banding Type	W		T		L	
		mm	inch	mm	inch	M	ft
STS410	Standard	6.4	1/4	0.50	.020	30	100
STS420	Standard	9.5	3/8	0.64	.025	30	100
STS430	Standard	12.7	1/2	0.75	.030	30	100
STS440	Standard	16.0	5/8	0.75	.030	30	100
STS450	Standard	19.0	3/4	0.75	.030	30	100
STE430	Economy	12.7	1/2	0.40	.016	30	100
STE440	Economy	16.0	5/8	0.40	.016	30	100
STE450	Economy	19.0	3/4	0.40	.016	30	100

STAINLESS STEEL - W5

Art No.	Banding Type	W		T		L	
		mm	inch	mm	inch	M	ft
ST404	Standard	12.7	1/2	0.75	.030	30	100
ST406	Standard	19	3/4	0.75	.030	30	100


STAINLESS STEEL - AISI 201

Art No.	Banding Type	W		T		L	
		mm	inch	mm	inch	M	ft
ST430	Heavy Duty	19.0	3/4	1.1	.044	30	100
ST431	Heavy Duty	25.4	1	1.1	.044	30	100
ST432	Heavy Duty	31.8	1-1/4	1.1	.044	30	100



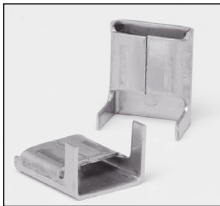
Buckles

Available for standard and heavy duty strapping.

Art No.	For Banding Type	Stainless Steel	W		
			mm	inch	
ST252	Standard	AISI 201	6.4	1/4	100
STB420	Standard	W4	9.5	3/8	100
STB430	Standard	W4	12.7	1/2	100
STB440	Standard	W4	16	5/8	100
STB450	Standard	W4	19	3/4	100

ST454	Standard	W5	12.7	1/2	100
ST456	Standard	W5	19	3/4	100


ST440	Heavy Duty	AISI 201	19	3/4	25
ST441	Heavy Duty	AISI 201	25	1	25
ST442	Heavy Duty	AISI 201	32	1-1/4	25

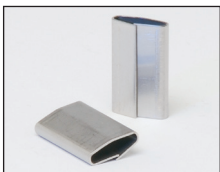


Wing Seals

Wing Seals should be used with Strapbinder economy strapping.

STAINLESS STEEL - W4


Art No.	W		
	mm	inch	
ST154	12.7	1/2	100
ST156	19.0	3/4	100
ST202SS	12.7	1/2	1000
ST203SS	15.8	5/8	1000
ST204SSHD	19.0	3/4	1000



Crimp Seals

Crimp style stainless steel pusher seals. Use with single notch sealers. Ideal for outdoor industrial applications.

STAINLESS STEEL - W4


Art No.	W		
	mm	inch	
ST1532SS	12.7	1/2	1,000
ST1534SS	19.0	3/4	1,000



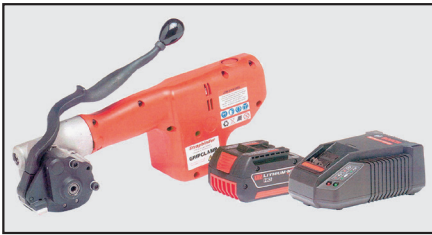
Screwbinder™ Buckles

Screwbinder™ Buckles Screwbinder Buckles are used in applications when a temporary clamp is desired or space limitations do not allow for tool roll-over. A set screw locks the band after tensioning.

STAINLESS STEEL - AISI 201

Art No.	W		
	mm	inch	
ST724	12.7	1/2	25
ST726	19.0	3/4	25

GripClamp Tool



Art No. #800500

Battery Powered Clamping Tool

Battery Powered Clamping Tool Battery powered clamping tool for 16 and 19mm J-Series clamps. Tensions, locks and cuts the strap. Unlimited take up, no refeeding. 125 clamps per charge. Battery & charger included.



Art No. #800505

Battery Powered Bench Mounted System

Battery Powered Bench Mounted System Battery powered clamping tool with foot pedal and bench mount fixture for J-Series clamps. Dual use versatility. Portable for field repairs but also bench mountable for in-house production assemblies. Battery & charger included.



Art No. #800805

Battery Powered Band and Buckle Tensioning Tool

Battery Powered Band and Buckle Tensioning Tool Consistent tensioning of 12.7, 16 & 19mm stainless strapping. Excellent option for large diameter hose, sign securement and bundling applications. Use with ear style buckles or wing seals. Battery, charger, bench mount fixture & foot pedal included.

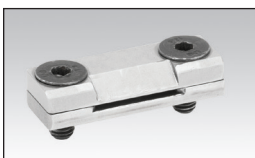
GripClamp Attachments



Art No. #800637

Band and Buckle Attachment

Band and Buckle Attachment Band and buckle attachment easily attaches to the GripClamp tool for use with band and buckle.



Art No. #800802

J Series Attachment

J Series Attachment J Series attachment easily attaches to the GripClamp tool for the application of stainless and galvanized J Series clamps.

Spin Tight Tools



ST-001

ST-001 features a spring loaded gripper lever for more efficient strap handling. The cut-off handle is vinyl clad for easier operation.

Art No.	For Banding		F Max
	WxT (mm) max	WxT (inch) max	
ST-001	19 x 0.76	3/4" x 0.030	1268N



ST402B

ST402B For heavy duty applications. The built-in cutter cuts off band prior to buckle closing.

Art No.	For Banding		F Max
	WxT (mm)	WxT (inch)	
ST402B	19 x 1.12 - 31.8 x 1.22	3/4" x .044 - 1-1/4" x .048	2668N

J-Series Adaptor

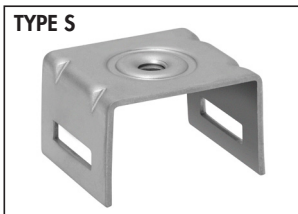
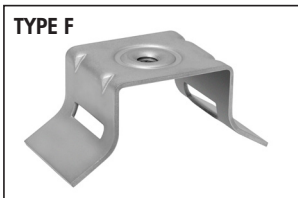


HBJ-001

The HBJ-001 adaptor allows J-Series preformed clamps to be applied in conjunction with the ST-001 Spin Tight Tool. High tension capability with simple "lift and lock" securement.


Art No.	Description
HBJ-001	For use with J-series preformed clamps and ST-001 spin tight tool

Sign Brackets

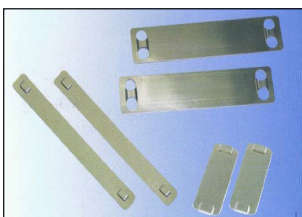


Sign Brackets Stainless steel sign brackets with M8 thread are available for sign mounting, using Strapbinder stainless steel strapping.

STAINLESS STEEL - W4


Art No.	Type	Description	
STSF4	F	Flared Bracket M8	50
STSS4	S	Straight Bracket M8	50

ID Tags



ID Tags can be fastened with Strapbinder Power Wrap ties.

STAINLESS STEEL - W5

Item No.	Dimensions		
	WxT (mm)	WxT (inch)	
ST750350	19 x 86	3/4" x 3-1/2"	100
ST750200	19 x 50	3/4" x 2"	100
ST150250	38 x 62	1-1/2" x 2-1/2"	100

